



CE 841 E.

Electric cooker, 4 electric hotplates,
1 electric oven 620 x 400.

- Body and front in stainless steel.
- Stainless steel legs with adjustable feet. Height: 150/175 mm.
- Total power: 11.7 kW.
- Electrical supply: three-phase 400 V + N + E.
- 400 V without N phase for additional cost.

Hob

- Dimensions : 800 x 650 mm.
- 1 x 2.6 kW hotplate, Ø 220 mm.
- 2 x 2 kW hotplates, Ø 180 mm.
- 1 x 1.5 kW hotplate, Ø 145 mm.

Oven

- Interior dimensions: W 620 - D 455 - H 305 mm.
- Power of heating elements:
Base + periphery roof: element: 3.6 kW - Grill: 2.85 kW.
- Thermostat.
- Standard equipment: 1 oven rack, 1 enamelled roasting dish.

CE

CE 841 E

W 800 - D 650 - H 900

Variations:

OVEN (instead of gas oven)

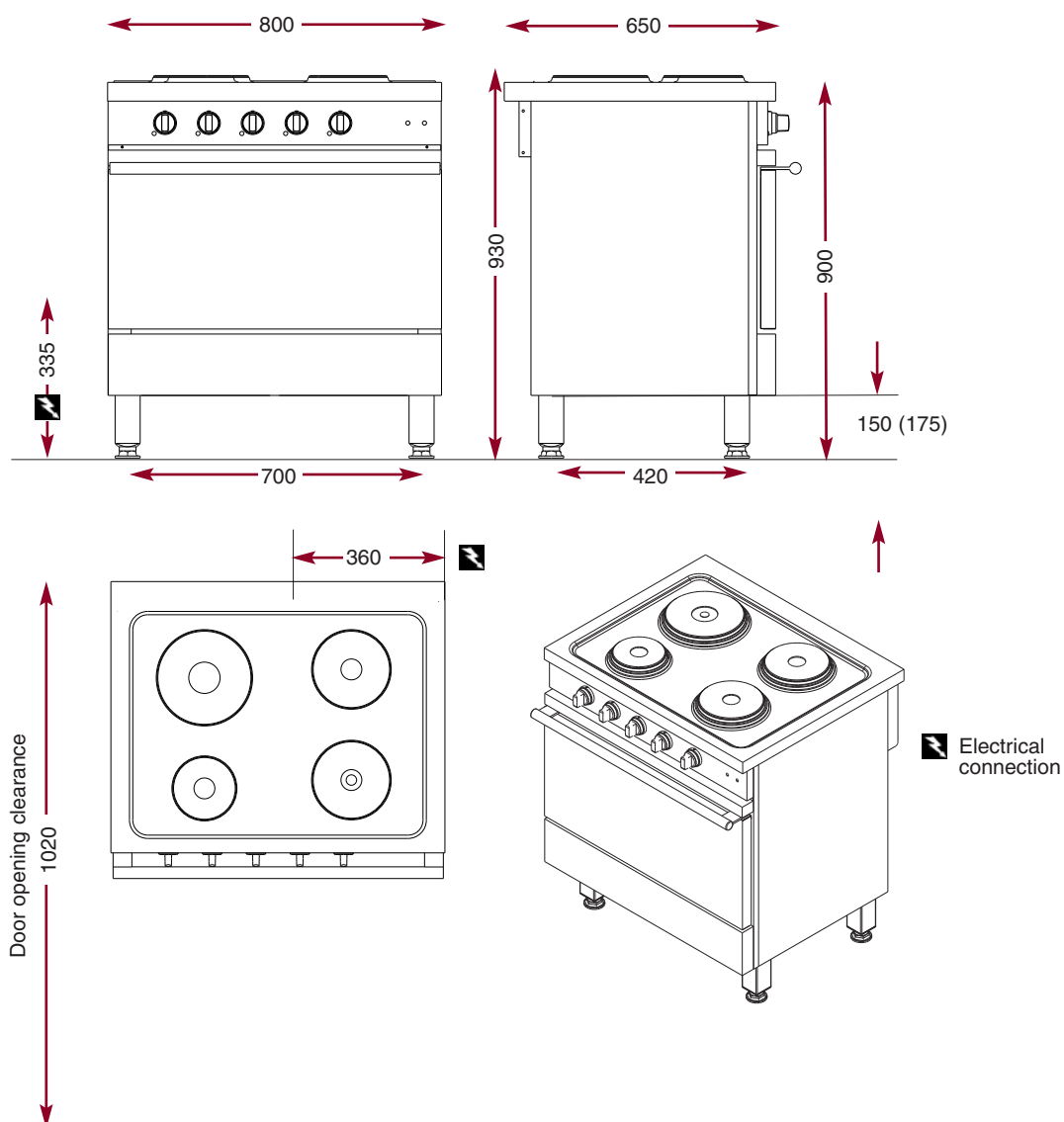
SFCT 801 1 convection oven (3.4 kW)*

SGE 801 Electric grill (in convection oven)

* Electrical supply: 400V + N + E only.

4 electric hotplates, 1 electric oven 620 x 400.

CE 841 E



AMBASSADE
D E R R O U R G O G N E

The Chef's Choice.

N° 15 - 2